

# Immersion Pumps TE/STE141...146

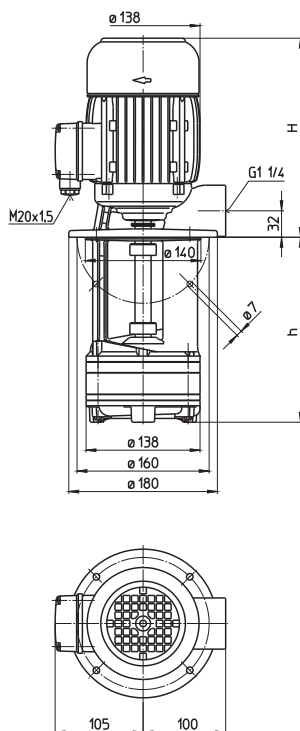
## Semi-open impellers



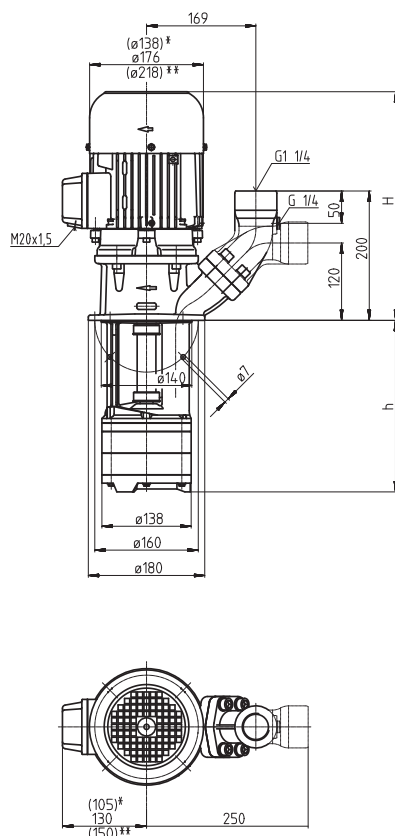
Hoogeindsestraat 5  
NL - 5447 PD Rijkevoort  
Nederland  
T : +31 (0) 485 - 371318  
F : +31 (0) 485 - 371918



### TE141, 142



### STE141...146



\*) Dimensions for STE141, 142  
\*\*) Dimensions for STE146

Type	Vol. del. at manom. del. head l/min / m	Height H mm	Depth of im- mersion h mm	Weight kg	Power kW	Voltage 3~ V	Fre- quen- cy Hz	Current A	Speed 1/min
<b>TE141/200</b>	80/11	223	200	13.5	0.5	220-240	50	2.42	2800
<b>270</b>			270	14.5					
<b>350</b>			350	15.5		380-420	50	1.40	2800
<b>440</b>			440	17.0					
<b>550</b>			550	18.5					
<b>TE142/150</b>	80/20	291	150	16.5	1.1	220-240	50	4.33	2850
<b>230</b>			230	18.0					
<b>300</b>			300	18.5	1.27	460	60	2.4	3440
<b>380</b>			380	19.5					
<b>470</b>			470	21.0					
<b>580</b>			580	23.0					
<b>STE141/120</b>	80/11	293	120	17.5					
<b>200</b>			200	18.5					
<b>270</b>			270	19.5	380-420	50	1.40	2800	
<b>350</b>			350	20.5					
<b>440</b>			440	22.0					
<b>550</b>			550	23.5					
<b>STE142/150</b>	80/20	361	150	21.5	1.1	220-240	50	4.33	2850
<b>230</b>			230	23.0					
<b>300</b>			300	23.5	1.27	460	60	2.4	3440
<b>380</b>			380	24.5					
<b>470</b>			470	26.0					
<b>580</b>			580	28.0					
<b>STE143/190</b>	80/33	406	185	32					
<b>270</b>			265	33					
<b>340</b>			335	34	1.95	460	60	3.5	3480
<b>420</b>			415	35					
<b>510</b>			505	36					
<b>620</b>			615	38					
<b>STE144/220</b>	80/45	439	220	36					
<b>300</b>			300	37					
<b>370</b>			370	38	2.55	460	60	4.4	3480
<b>450</b>			450	39					
<b>540</b>			540	41					
<b>650</b>			650	42					
<b>STE145/270</b>	80/56	439	270	40					
<b>350</b>			350	41					
<b>420</b>			420	42	2.94	460	60	5.1	3480
<b>500</b>			500	43					
<b>590</b>			590	44					
<b>700</b>			700	46					
<b>STE146/300</b>	80/70	478	305	52					
<b>380</b>			385	53					
<b>450</b>			455	54	4.55	460	60	7.9	3520
<b>530</b>			535	55					

### Immersion Pumps

are plain centrifugal pumps with the impeller fitted on the driving shaft extension. They are mounted on top of the container, the pump extension being immersed in the coolant.

The dimensions are based on standard specification **EN 12157**.

The maximum coolant level must stay a few mm/inches below the mounting flange.

The STE serie offers a **(SAE) flange** with pressure gauge connection port.

The flange can be rotated for either horizontal or vertical pipe connections.



All types are also available as quick-suctioning immersion pumps equipped with "BRINKMANN's Suction De-aeration System". See series TL/STL.

### Applications

Types of fluid  
coolants  
cooling/cutting oils  
Kinematic viscosity  
...45 mm<sup>2</sup>/s (45 cSt)  
Pumping temperature  
0...60° C

### Construction

Pump body	cast iron
Cover	cast iron PPS (TE141, STE141)
Impellers	PPS
Shaft	steel
Optional: Cover	cast iron (TE141, STE141)
Suction cover Impellers	with threaded inlet brass cast steel
Other materials	on request

### Noise level

TE141...STE142	60 dBA
STE143...STE145	68 dBA
STE146	73 dBA

