

Horizontal End-Suction Pumps

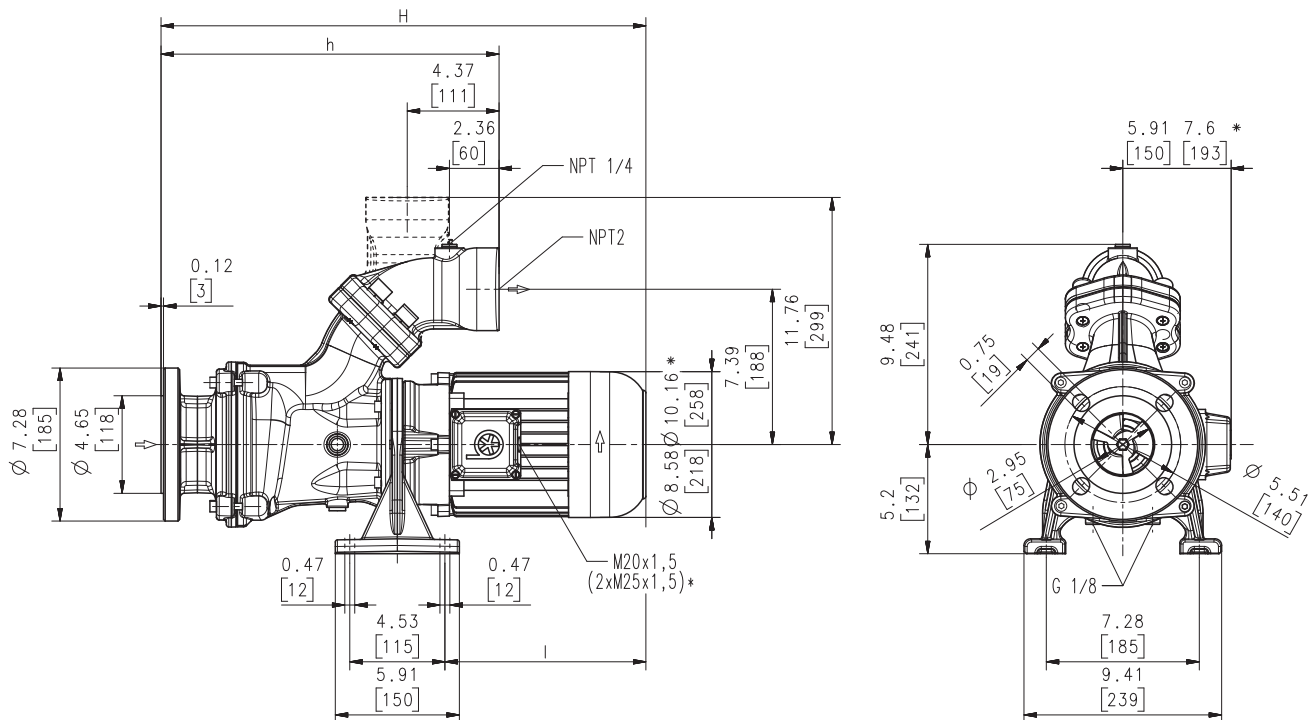
SBA901S...903S

Axial/semi-open impellers



60 Hz

SBA901S...903S



Dimensions in Inches / mm; *) Dimensions SBA902S, 903S

Type	Flow at head	Dimensions				Length		Weight		Power	Voltage 3 ~	Fre- quen- cy	Current	Speed
	GPM /Feet l/min /m	H inch	H mm	h inch	h mm	l Inch	l mm	Lbs	kg	HP kW	V	Hz	AMPS	RPM
SBA901S	175/46	26.4	671	16.1	409	12.9	328	145.5	66	5.1	230	60	12.8	3520
	700/14									3.8	460	60	6.4	3520
SBA902S	175/95	32.0	812	18.9	479	15.7	399	227	103	9.2	230	60	21.2	3550
	700/28									6.9	460	60	10.6	3550
SBA903S	175/140	36.2	919	21.6	548	17.2	437	273	124	13.8	230	60	31.6	3550
	700/42									10.3	460	60	15.8	3550

Horizontal End-Suction Pumps

are centrifugal inline pumps with a compact design where the impeller is mounted onto the extended motor shaft.

These pumps are not self-priming and must be gravity fed. All pumps are equipped with a single mechanical seal.

Upon request a second mechanical seal is available to allow for dry-running (-GD).

This pump series is designed for horizontal installations next to a tank and for pumping **air entrained coolant** fluids, such as **water-soluble coolants or cutting oils**, as they occur in **high speed turning, milling or grinding applications**.

The SBA pumps are equipped with the user-friendly 45 degree **flange** connection which allows for either vertical or horizontal pipe connection and the connection of a pressure gauge with NPT 1/4.

For more information see mechanical features within the technical information section.

Applications

Types of fluid
coolants
cooling/cutting oils
Kinematic viscosity
...200 SSU (...45 mm²/s)
Pumping temperature
30...175 °F (0...80 °C)

Construction

Pump body	cast iron
Cover	cast iron
Impeller axial	cast steel
Impeller radial	cast steel
Shaft	steel
Mechanical seal	SiC
Noise level	
SBA901S	73 dBA
SBA902S...SBA903S	78 dBA

