

### Applications

In water treatment facilities.  
 Pressurised drainage systems.  
 Drainage of faecal water from housing and garages.  
 Drainage for water with solids in public establishments, restaurants, etc.  
 General drainage systems in industry, farms, farms, livestock farms, excavations, garages and civil engineering works. Drainage of cesspits and septic tanks. Atex version for installing in the facilities described in the Atex regulations (II 2G d II B T4).

### Materials

Pump body and impeller in cast iron.  
 Double mechanical seal: on the pump side in silicon carbide and on the motor side in graphite/aluminium oxide with an intermediate oil chamber. The motor shaft in AISI 420 stainless steel.  
 AISI 304 stainless steel screws.  
 O-rings in NBR.

### Motor

Asynchronous, 2 pole. IP 68 protection.  
 Class F insulation.  
 Continuous operation (fully submerged).  
 Atex II 2G version. Ex d II B t4.  
 Atex version is supplied with a humidity sensor and thermal protection in case the motor overheats.  
 To ensure full protection, we recommend you install the appropriate protection and control panels.

### Equipment

Supplied with 10 m of power cord.  
 Level switch (optional, for connecting to electrical panel).

### Limitations

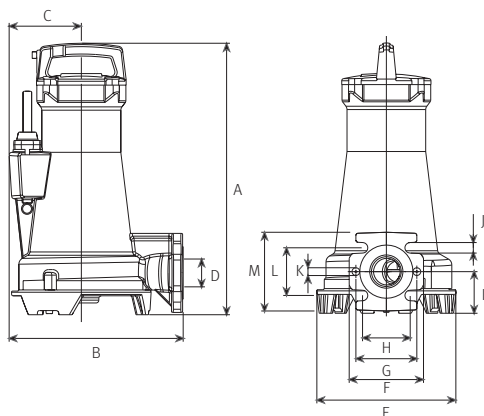
Solids passage Ø up to 40 mm with a DN 50 impeller.  
 Maximum immersion depth 9 metres.  
 Maximum number of start-ups 15 per hour.  
 Maximum temperature: 40 °C.



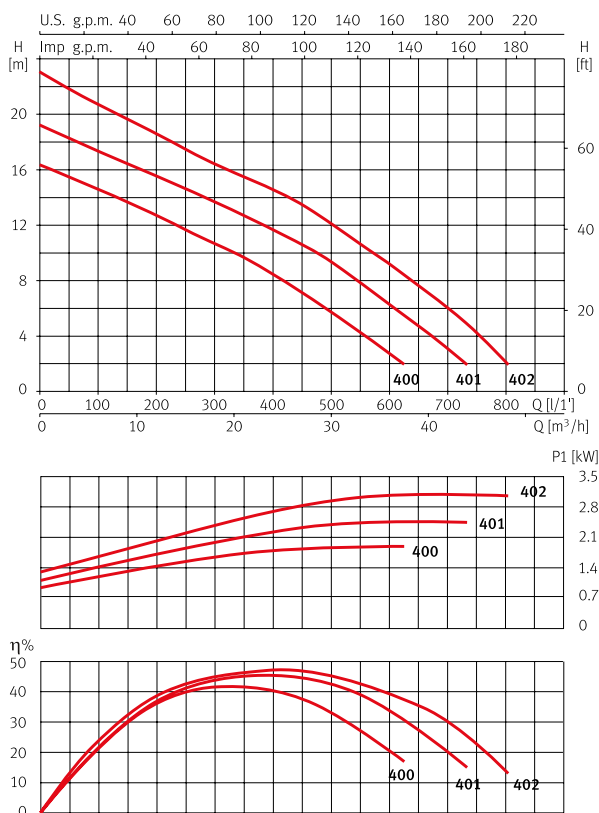
### Dimensions and weights

Model	A	B	C	D	E	F	G	H	I	J	K	L	M	kg
Drainex 400	488	313	130	Ø50	251	134	110	86	75	19	Ø14	86	142	45
Drainex 401	488	313	130	Ø50	251	134	110	86	75	19	Ø14	86	142	45
Drainex 402	488	313	130	Ø50	251	134	110	86	75	19	Ø14	86	142	45

Impeller ext. Ø: Drainex 400: 115 mm. Drainex 401: 125 mm. Drainex 402: 136 mm.



### Performance curves at 2900 rpm

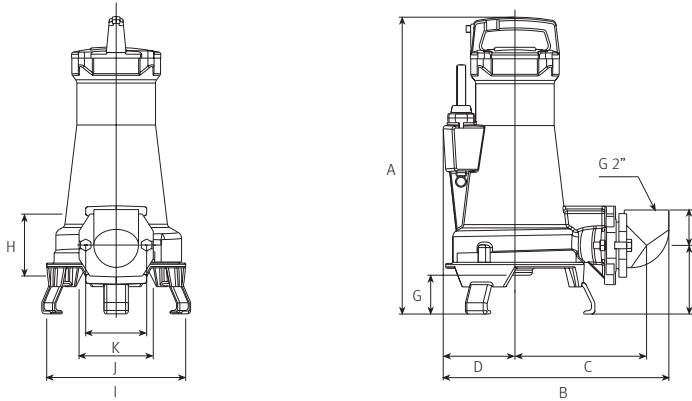


### Hydraulic performance table

Model	I (A)	P1 (kW)	P2		l/min	100	200	400	500	600	700	800
	3~400 V	3~	(kW)	(HP)		m <sup>3</sup> /h	6,0	12	24	30	36	42
Drainex 400	4,1	1,9	2,6	3,5	mwc	14,6	12,7	8,3	5,9	2,8		
Drainex 401	4,8	2,45	2,6	3,5		17,3	15,5	11,6	9,3	5,2	3	
Drainex 402	5,6	3,1	2,6	3,5		20,7	18,6	13,7	12	9,3	5	2

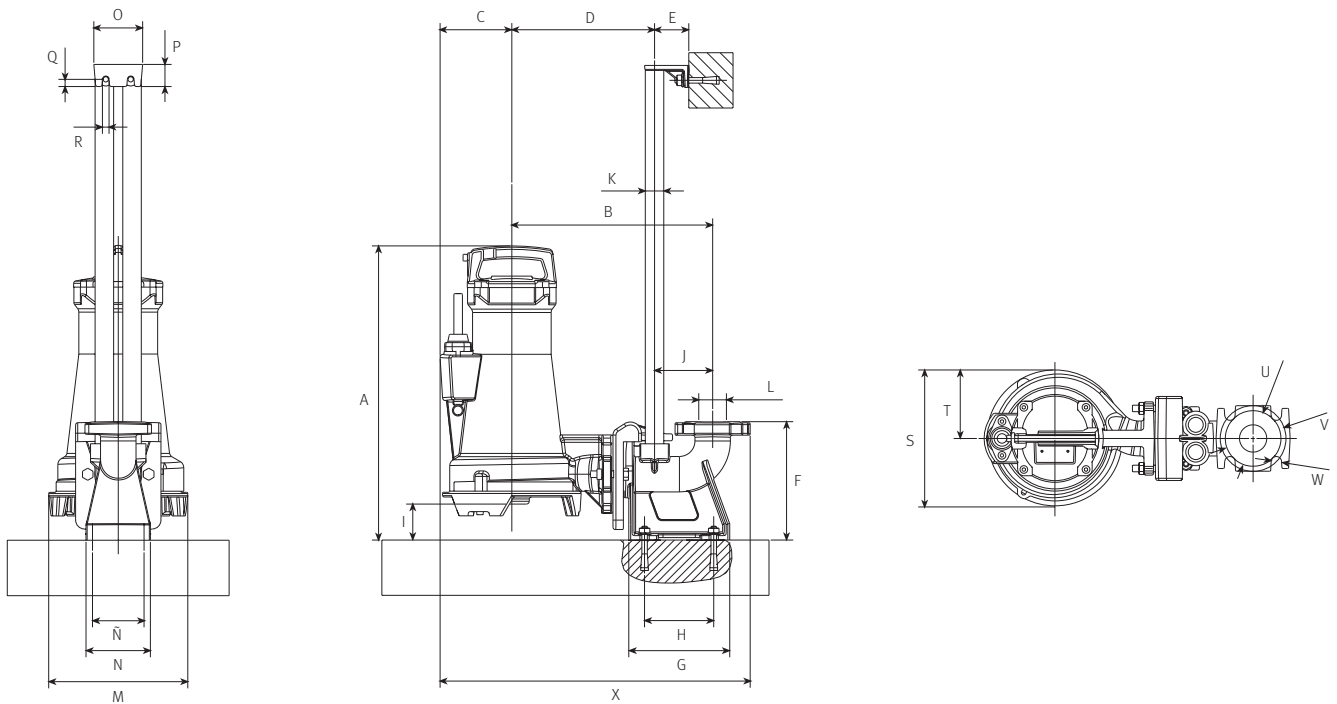
## Portable version

A	B	C	D	E	F	G	H	I	J	K
537	408	238	130	124	64	70	110	251	134	110



## Fixed version

A	B	C	D	E	F	G	H	I	J	K	L	M	N	Ñ	O	P	Q	R	S	T	U	V	W	X
532	363	130	258	62	214	182,5	125	65	105	1"	Ø50	251	116	93	88	40	13	12	251	125	100	120,5	19	561



## Accessories

### Portable version

DR3 Kit  
DN 50 (flange 50)



Support base with elbow for automatic anchoring

ANSI 150 2"



Upper anchoring on double guide tube

### Fixed version

DR6 Kit



90° elbow at 2"



Stainless steel feet