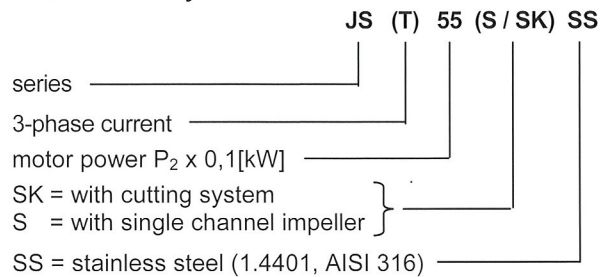


Identification key



Technical data

	S	SK
flow:	up to 130 m ³ /h	up to 144 m ³ /h
head	up to 32 m	up to 25 m
free passage	up to 55 mm	up to 70 mm
medium temperature:	max. 40 °C	
voltage:	3 x 400 V, 50 Hz	

Application

Pumping of gray and waste water and pumpable sludge, and sewage, industrial waste water, excrements and domestic waste water. Stainless steel version for aggressive waters (sea water)

For stationary or portable operation – fully submerged. SK series is specially suitable for pumping of waste water with coarse and long fibrous contents. The cutting system disintegrates the mixture into an easily floatable output. Safe, continuous operation up to 40°C with fully submerged pump.

Main application

Disposal of waste water from remote single- and multiple dwellings, apartment buildings, and business locations. Operation also in pressurized waste water disposal systems.

Extent of delivery

including 10m electrical cable

Accessories

All types can be connected to SR submersible couplings. E =electrode controlled, motor protection plug with/ without float switch Storz couplings, none-return valves, submersible couplings, and control units.

Pump

Submersible pumps are constructed as one block i.e. motor and pump are directly connected by the drive shaft. S-series with single channel impeller. The water pressure tight encapsulated motor is cooled by the surrounding medium.

Cutter and impeller – SK version

cutter consist of single channel impeller with integrated tungsten carbide re-inforced sheer edge and stationary saw-toothed cutting plate.

Motor

3-phase motor with integrated overload protection 400 V (3-phase), 50 Hz, protection, IP 68, insulation class E.

Sealing

Triple sealing system. Motor: slip ring seal carbon/ceramics. Medium: slip ring seal SIC / SIC and shaft seal ring Nitrile, with intervening oil retention chamber

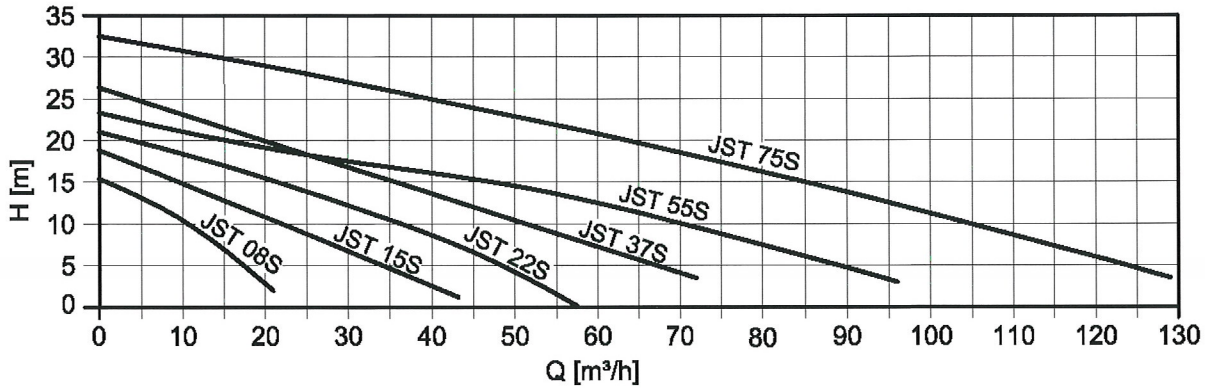
Material

component	material	
	JST-S / JST-SK	JST-S / SK - SS
motor housing	stainless steel 1.4301	stainless steel 1.4401
motor head	cast iron, EN GJL250	stainless steel 1.4401
pump housing	cast iron, EN GJL250	stainless steel 1.4401
bottom support leg (SK with cutting plate)	cast iron, EN GJL250	stainless steel 1.4401
impeller	cast iron, EN GJL250	stainless steel 1.4401
	SK: tungsten carbide re-inforced sheer edge	
transport handle	stainless steel 1.4301	stainless steel 1.4401

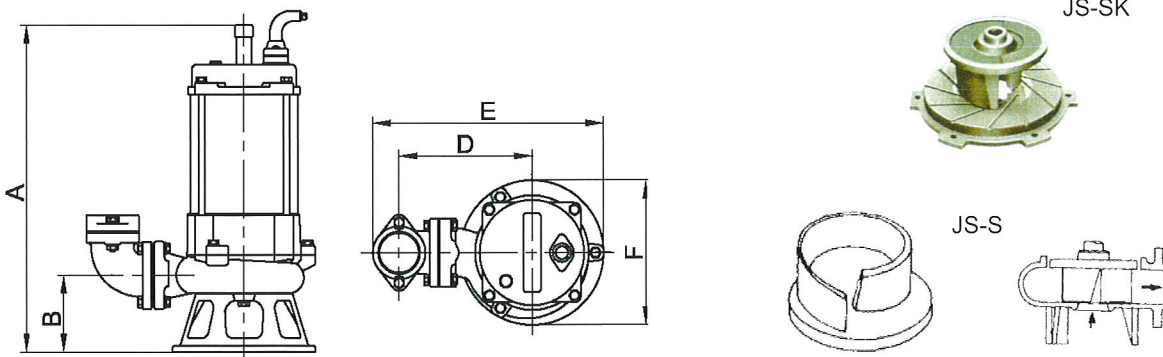
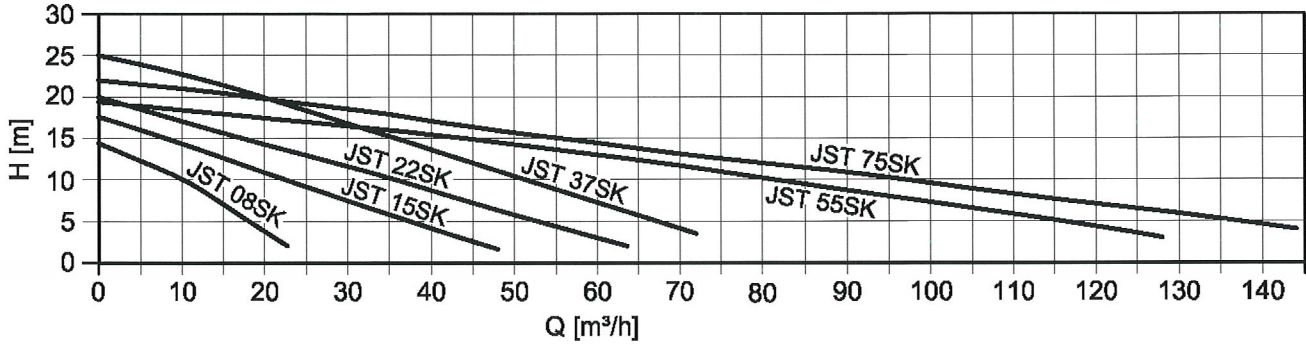
Specification

type	motor output P_2 [kW]	rated current [A]	3 x 400 V, 50 Hz						
			Q = yield (m ³ /h)			H = head (m)			
			Q	H	SS	SK	SS	SK	
JST 08 S (SS)	0,75	2,0	Q	0	7,2	11	15	18	21
			H	15	12	9	7	5	2
JST 08 SK (SS)	0,75	2,0	Q	0	5	10	13	18	23
			H	14,5	12	10	8	5	2
JST 15 S (SS)	1,5	3,4	Q	0	10	15	20	30	43
			H	19	15	12,5	11	7	1
JST 15 SK (SS)	1,5	3,4	Q	0	10	20	30	40	48
			H	17	14	11	7,5	4	1
JST 22 S (SS)	2,2	5,0	Q	0	10	20	30	45	55
			H	21	18	15	12	7	2
JST 22 SK (SS)	2,2	5,0	Q	0	15	30	40	50	63
			H	20	16	12	8	6	2
JST 37 S (SS)	3,7	7,5	Q	0	20	30	40	50	72
			H	26	20	17	13,5	11	3,5
JST 37 SK (SS)	3,7	7,5	Q	0	20	30	40	50	72
			H	25	20	17	14	11	3,5
JST 55 S (SS)	5,5	11,0	Q	0	20	40	60	90	96
			H	23	19	16	13	5	3
JST 55 SK (SS)	5,5	11,0	Q	0	20	40	60	80	126
			h	19	17,5	15	13	10	3
JST 75 S (SS)	7,5	16,0	Q	0	30	60	90	110	130
			h	32	27	21	14	9	3
JST 75 SK (SS)	7,5	16,0	Q	0	35	50	70	100	144
			H	22	18	15	13	8	4

Series JST – S (single channel type impeller)



Series JST – SK (single channel type impeller with saw-toothed cutting wheel)



type	motor output		voltage 50 Hz	rated current [A]	H _{max} [m]	Q _{max} [m³/h]	free ball passage [mm]	outlet R	size					weight [kg]
	P ₁ [kW]	P ₂ [kW]							A [mm]	B [mm]	D [mm]	E [mm]	F [mm]	
JST 08 S (SS)	1,2	0,75	400 V ~ 3 ph	2,0	15	21	20	2"	462	167	136	315	192	27
JST 08 SK (SS)	1,2	0,75	400 V ~ 3 ph	2,0	14	22	20	2"	462	167	136	315	192	30
JST 15 S (SS)	2,2	1,5	400 V ~ 3 ph	3,4	19	43	45	3"	501	167	136	385	236	30
JST 15 SK (SS)	2,2	1,5	400 V ~ 3 ph	3,4	17	48	45	3"	501	167	136	385	236	38
JST 22 S (SS)	3,5	2,2	400 V ~ 3 ph	5,0	21	57	45	3"	544	205	150	405	235	40
JST 22 SK (SS)	3,5	2,2	400 V ~ 3 ph	5,0	20	63	45	3"	544	205	150	405	235	41
JST 37 S (SS)	5,0	3,7	400 V ~ 3 ph	7,5	26	72	50	4"	598	205	150	405	241	44
JST 37 SK (SS)	5,0	3,7	400 V ~ 3 ph	7,5	25	72	50	4"	598	205	150	405	241	45
JST 55 S (SS)	7,5	5,5	400 V ~ 3 ph	11,0	23	96	55	4"	718	242	200	502	298	65
JST 55 SK (SS)	7,5	5,5	400 V ~ 3 ph	11,0	19	128	70	4"	718	242	200	502	298	65
JST 75 S (SS)	12,0	7,5	400 V ~ 3 ph	16,0	32	129	55	4"	772	242	200	698	298	75
JST 75 SK (SS)	12,0	7,5	400 V ~ 3 ph	16,0	22	144	70	4"	772	242	200	698	298	75



Hoogindsestraat 5
NL - 5447 PD Rijkevoort
Nederland
T : +31 (0) 485 - 371318
F : +31 (0) 485 - 371918
info@pompentechniek.nl
www.pompentechniek.nl