

Electro-submersible Pumps



Hoogeindsestraat 5
NL - 5447 PD Rijkevoort
Nederland
T : +31 (0) 485 - 371318
F : +31 (0) 485 - 371918
info@pompentechnik.nl
www.pompentechnik.nl



SPP submersible pumps are custom engineered for the Oil and Gas industry. Pumps are of the vertical turbine design and can be provided in either single or multi-stage configuration to suit client's requirements. They are driven by submersible (IP68) motors as an alternative to deck mounted drive units and can be supplied up to 100 meters in overall length.

Typical Applications

- Main fire pump
- Firewater jockey pump
- Booster pump
- Seawater intake
- Seawater lift
- Cooling water
- Utilities



SPP PUMPS

Jansen Pompentechnik T: +31(0)485-371318 E: info@pompentechnik.nl

Specifications

In pump packages incorporating electro submersible pumps, the pump and motor is located below sea level in a caisson, while the diesel generator is placed on the platform where space allows. These systems tend to be favoured where platform design or space limitations prevent the use of conventional platform mounted lineshaft pumps.

Dependent upon application, these pumps can either be driven by existing platform supplies or dedicated diesel generator drives. In instances where dedicated diesel generators are required, SPP are able to specify and supply fully packaged generator sets to meet this requirement.

Research and operating experience has shown the diesel alternator/electric drive concept to be very efficient, comparatively simple to install and maintain, and to have a lower life cycle cost than other indirect drive systems currently available. It is ideally suited to the rigorous conditions that exist offshore where meticulous cleanliness during installation and maintenance is almost impossible to achieve.

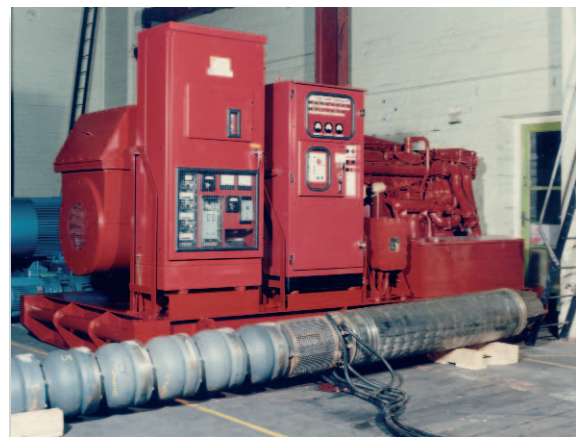
Materials of Construction (standard options)

Bowls	Cast iron	Austenitic CI	Bronze	Duplex ST ST
Impellers	Cast iron or bronze	Austenitic CI or Duplex ST ST	Bronze	Duplex ST ST
Shafts and Couplings	Steel	Duplex ST ST	Duplex ST ST or Nickel Alloy	Duplex ST ST
Column Pipes	Fabricated steel	Austenitic CI	Bronze	Duplex ST ST
Discharge Bend	Cast Iron or Fabricated Steel	Austenitic CI	Bronze	Duplex ST ST
Submersible Motors	Cast Iron	Duplex ST ST	Bronze	Duplex ST ST

Other materials of construction options in suitable combinations are available on request.

Pump Design Options

1. Impeller fixing by keys or collets
2. Cast or fabricated column pipes
3. API 610 construction
4. Marine anti-fouling systems
5. Sacrificial anodes



Pump and motor alongside its dedicated diesel generator



Assessed to ISO 9001:2000
Certificate No. 111