

Jansen

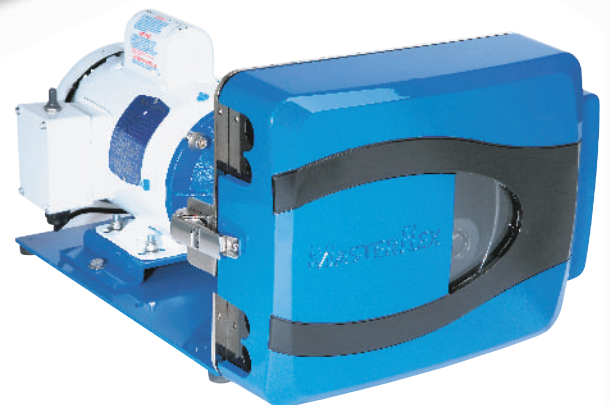
POMPEN- & WATERTECHNIEK

Hoogeindestraat 5
NL - 5447 PD Rijkevoort
Nederland
T : +31 (0) 485 - 371318
F : +31 (0) 485 - 371918
info@pompentechniek.nl
www.pompentechniek.nl

Grayledge Pump & Industrial
Ph: 603-635-3701
Fax: 866-373-8490
Web: www.MasterflexPump.com



Masterflex® B/T® Rapid-Load® Pump Systems



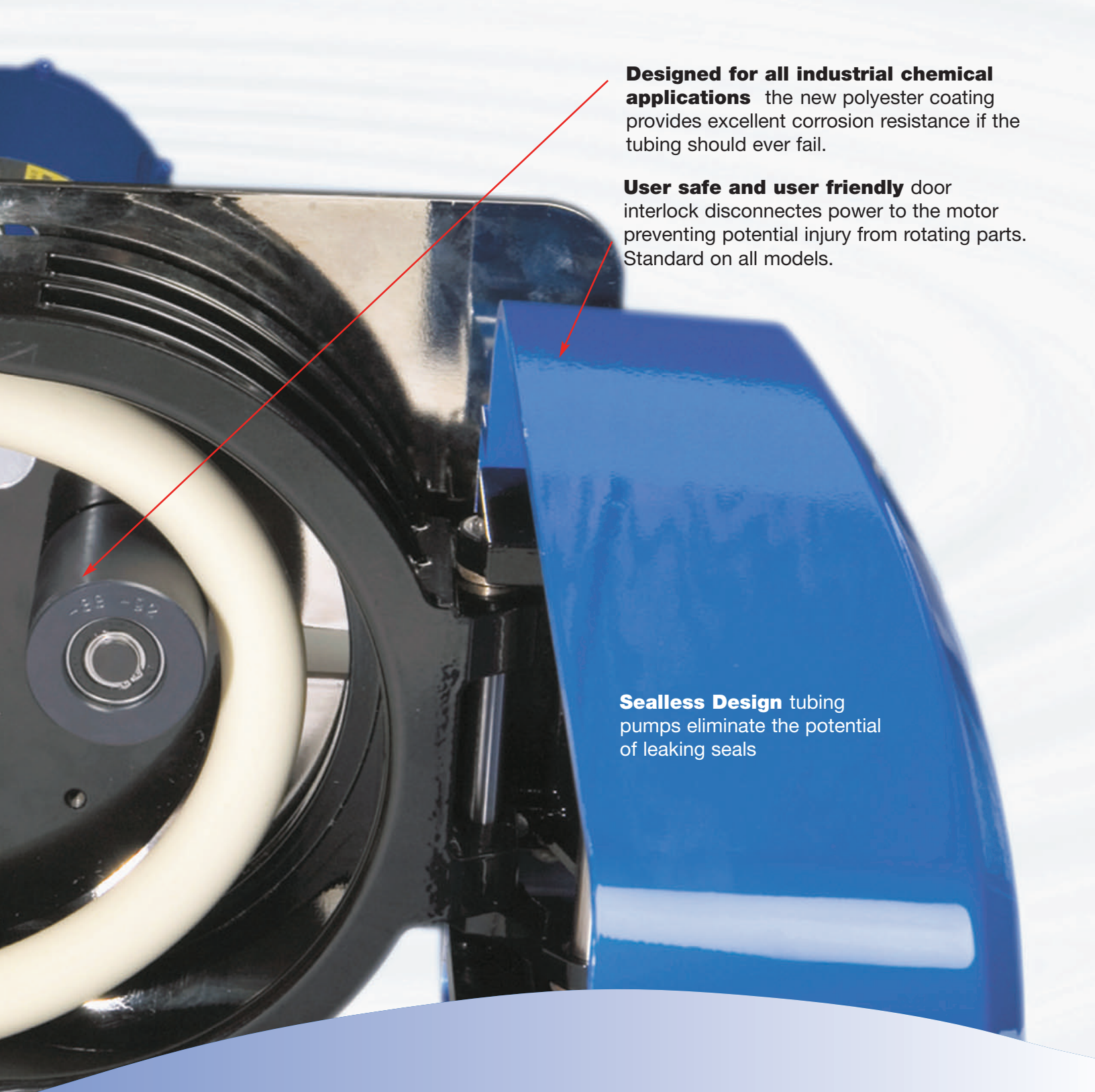
Faster and easier tube changes with the new Rapid-Load occlusion mechanism, leveraged by the new industrial design cover, the occlusion bed slides away from the rotor.

Longer tubing life and higher flow performance is achieved by an increase in the rotor diameter and a decrease in speed.

Tubing failures are minimized by use of a unique “tangential flying-taper” incorporated into the design of the occlusion bed.

No tool required and error-free tube loading with the new PerfectPosition tubing retention system that holds the tube in place as you wrap the tubing around the rotor into the other retention clamp.

High-Volume, High Accuracy Fluid handling with the new B/T Rapid-Load Pump System



Designed for all industrial chemical applications the new polyester coating provides excellent corrosion resistance if the tubing should ever fail.

User safe and user friendly door interlock disconnects power to the motor preventing potential injury from rotating parts. Standard on all models.

Sealless Design tubing pumps eliminate the potential of leaking seals

Masterflex B/T pumps are the best choice for higher flow applications, up to 9.7 GPM (37LPM). Their durable construction ensures long service life with minimal maintenance. Choose from a variety of models on the following pages suitable for nearly any application, from fixed speed pumps to digital dispensers, to hazardous-duty and air-driven pumps.

All B/T pumps include a new and improved B/T pump for fast and easy tubing changes. The Rapid-Load occlusion mechanism slides the tubing bed out of the way for easy tube loading and improved occlusion of the tubing when it closes. The PerfectPosition tubing retention mechanism system holds the tubing firmly in place to allow for a simple loading process. New tubing sizes provide better performance in higher-pressure applications and provide longer life to the tubing.



Analog or Digital Variable-Speed Pump Systems are Ideal for Viscous Materials

Jansen Pompentechniek T: +31(0)485-371318 E: info@pompentechniek.nl

B/T Analog Pump System



Achieve the highest flow rates of any Masterflex pump—up to 37 LPM (9.8 GPM)

- Simple control make this easy - to - operate
- Washdown pumps handle the toughest process and production applications, and then clean up with ease
- Detachable controller with 3-m (10-ft) cord mounts on pump or wall
- IP56-rated motor protects against dust and strong jets of water
- Reversible motor: purge before or after pumping, pump fluid in either direction

B/T Digital Modular Pump System

High-volume, high-accuracy dispensing

- Dispense by volume or time, or pump continuously
- Separate motor and controller by up to 25 feet for convenient operation
- IP56-rated controller and motor protect against dust and water
- Keypad lock/unlock feature helps lock in your settings and prevents accidental or unauthorized changes.
- Simple intuitive controls. Start, stop, prime, reverse, calibrate, and dispense using the sealed keypad.
- Display shows flow rate in metric or English units (LPM or GPM)



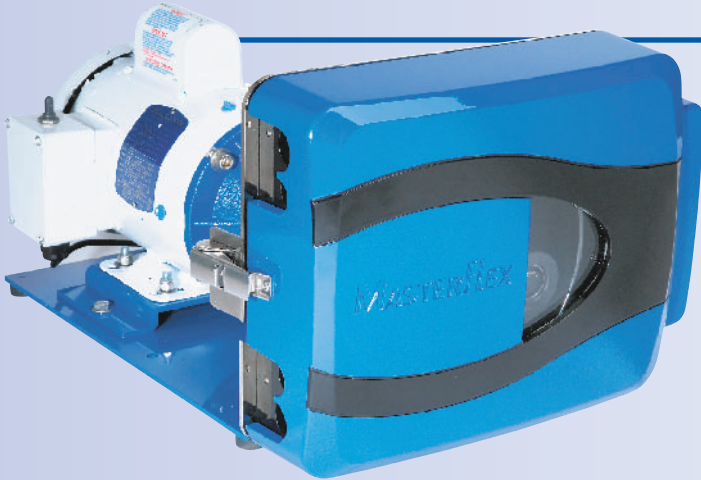
Ideal for Pharmaceutical processing:

- **New cover design provides CIP/SIP capability by simply opening the pump cover.**
- **PerfectPosition retention system provides fast tubing changes with assured loading positioning – preventing premature tubing failures.**
- **Gentle low-shear pumping action will not damage shear-sensitive fluids.**
- **High-purity only the tubing material contacts the fluid media.**



B/T Fixed Speed and Hazardous Duty Pump Systems

B/T Fixed-Speed Pump



Economical and Easy to Operate

- Fixed-speed units are ideal for economical transfer and fixed flow applications
- Reversible motor: purge before or after pumping, pump fluid in either direction
- IP55-rated motor—wash off dirt or debris without harming pump

B/T Hazardous-Duty Pump System

Use in locations where motor sparking could be a hazard

- Agency-certified for use in hazardous locations
- Hazardous-duty pumps handle the toughest process and production applications, and then clean up with ease
- IP55-rated motor protects against dust and low-pressure jets of water



Ideal for food processing:

- **High flowrates allow fast and easy transfer of bulk fluids.**
- **Large size tubing pumps highly viscous fluids up to 10,000 cPs.**
- **New cover design provides CIP/SIP capability by simply opening the pump cover.**
- **PerfectPosition retention system provides fast tubing changes with assured loading positioning – preventing premature tubing failures.**
- **High-purity only the tubing material contacts the fluid media.**



B/T Air-Powered and Pump Head Adapter Systems



B/T Air-Powered Pump System

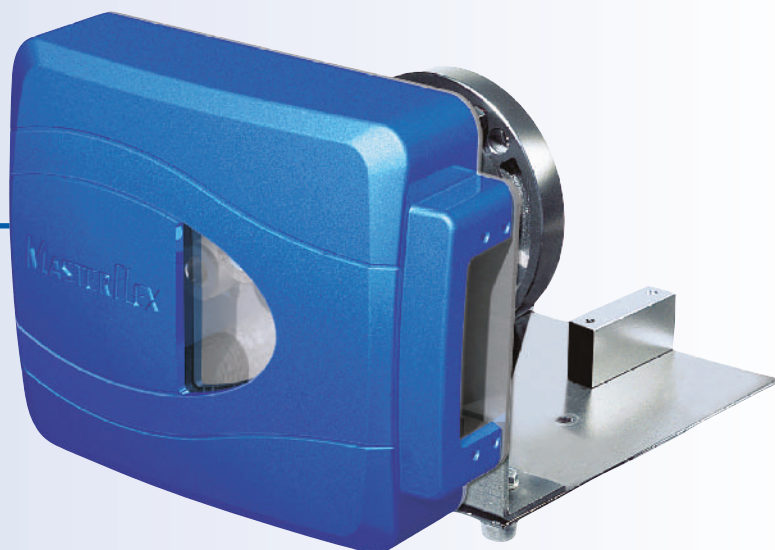
Use in locations where electricity is unavailable

- Includes pressure regulator, oiler and filter—control your compressor air to match pump requirements
- IP56-rated motor protects against dust and strong jets of water

B/T Rapid-Load Pump Heads

Use your existing motor to complete a high capacity Masterflex B/T pump

- Compatible with standard 56C frame or IEC 72/ISO 71 motors with B5 motor flange
- Pump heads require a minimum 1/2 hp motor with a maximum of 1800 rpm
- Supply your own motor and controller



Ideal for water and wastewater treatment:

- High flowrates and accurate speed control provides accurate metering of high-volume chemicals.
- Large size tubing pumps highly viscous fluids up to 10,000 cPs.
- PerfectPosition retention system provides fast tubing changes with assured loading positioning – preventing premature tubing failures.
- Chemically resistant tubing and construction provides long term operation with harsh chemicals.

PUMP TUBING FORMULATION		PERFECT POSITION PUMP TUBING	
		B/T 87	B/T 91
Silicone (platinum-cured)	10 ft (3.0 m) per pack	96510-87	96510-91
Silicone (peroxide-cured)	10 ft (3.0 m) per pack	96400-87	96400-91
BioPharm silicone (platinum-cured)	25 ft (7.6 m) per pack	96422-87	96422-91
BioPharm Plus silicone (platinum-cured)	25 ft (7.6 m) per pack	96442-87	96442-91
C-FLEX (50 A)	10 ft (3.0 m) per pack	06424-87	06424-91
PharMed BPT	25 ft (7.6 m) per pack	06508-87	06508-91
	3 ft (0.9 m) per pack	95668-87	95668-91
PharmaPure	25 ft (7.6 m) per pack	06435-87	06435-91
Norprene (A 60 F)	25 ft (7.6 m) per pack	06402-87	06402-91
	3 ft (0.9 m) per pack	06403-87	06403-91
Tygon LFL	25 ft (7.6 m) per pack	06429-87	06429-91
	3 ft (0.9 m) per pack	06430-87	06430-91



Cross Sections

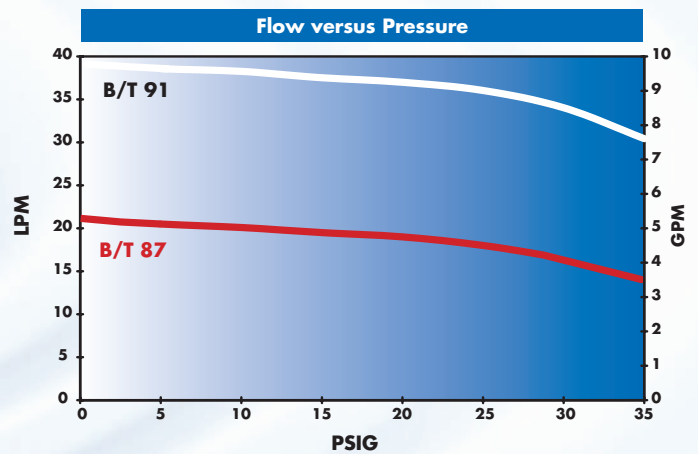
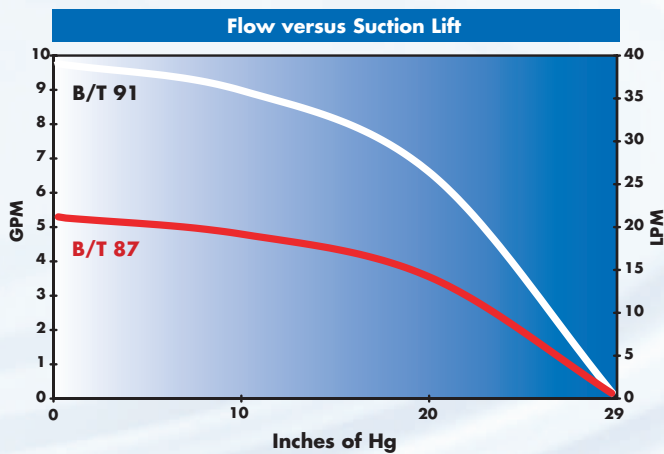
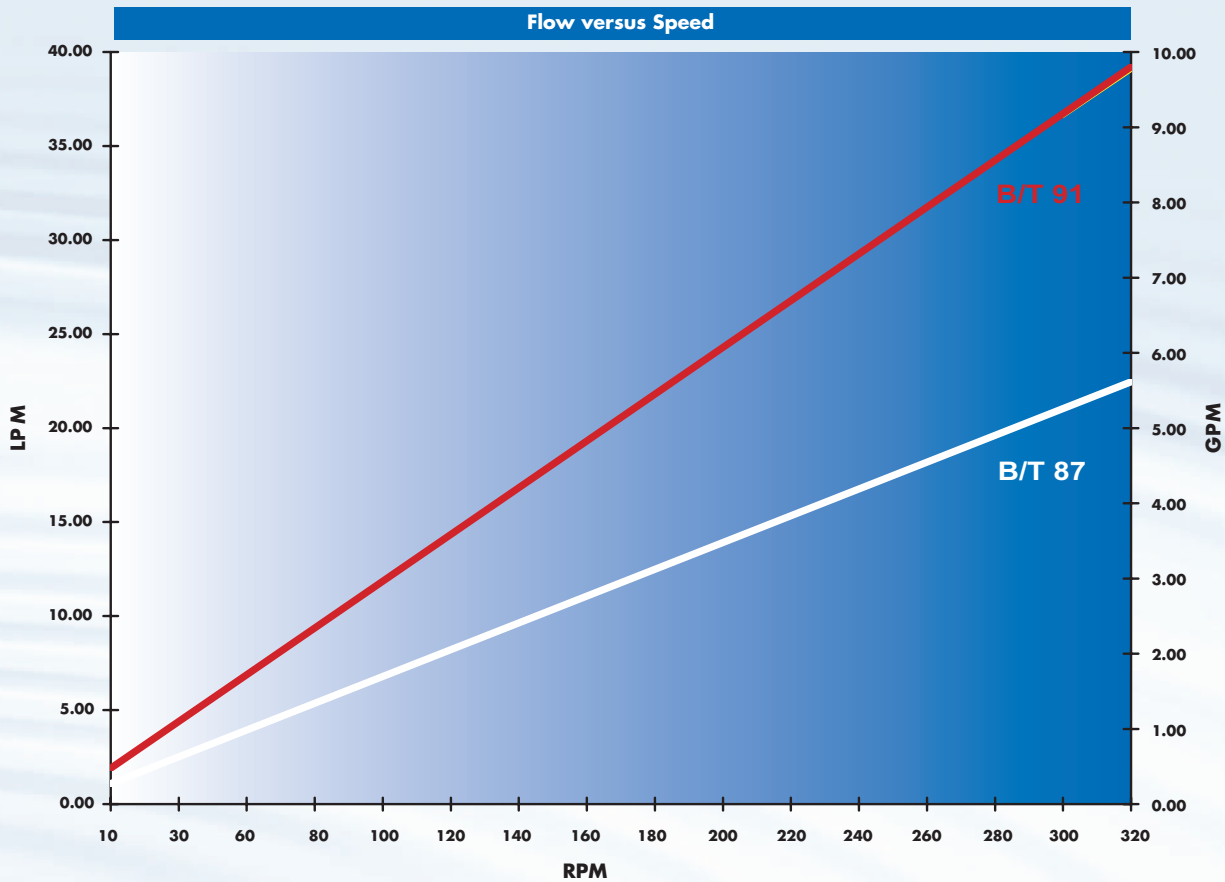


Specifications

Pump tubing size	Precision pump tubing	
	B/T 87	B/T 91
Inside diameter (nominal)	0.5" (12.7 mm)	0.75" (19.0 mm)
Hose barb size	1/2" (12.7 mm)	3/4" (19.0 mm)
Flow range (approximate)* with 3 to 321 rpm drive	0.3 to 17.7 LPM (0.08 to 4.7 GPM)	1 to 37 LPM (0.3 to 9.7 GPM)
Maximum pressure [†] , continuous	25 psi (1.7 bar)	22 psi (1.4 bar)
Maximum pressure [†] , intermittent	40 psi (2.7 bar)	35 psi (2.4 bar)
Maximum vacuum [†]	26" Hg (660 mm Hg)	
Suction lift [†]	29 ft H ₂ O (8.8 m H ₂ O)	

*Determined under the following conditions: 0 psi at inlet, 0.5 psi at outlet; water temperature at 72°F (22°C). [†]Actual performance varies depending on tubing formulation—values shown are for firm tubing.

B/T PerfectPosition tubing information and Rapid-Load Pump Performance data



Ensure optimum performance from your Masterflex pump

- Custom extruded to fit Masterflex pumps
- Improved tubing is engineered for long life in peristaltic pump applications
- New PerfectPosition tubing marks show the exact placement of tubing in the pump head to provide the best performance and life of the tubing
- Chemically resistant tubing and construction provides long term operation with harsh chemicals.

	BT PUMP WITH VARIABLE SPEED MOTORS AND DIGITAL CONTROLS				BT PUMP WITH FIXED SPEED DRIVES, TEFC, WASHDOWN AND HAZARDOUS DUTY				BT PUMPHEADS WITH GEARBOXES/MOTOR ADAPTERS AND AIR DRIVES		
CATALOG NUMBER	940-1610	940-1615	940-2610	940-2615	940-1625	940-1815	940-1630	940-1635	940-3399	940-4399	940-1620
PERFORMANCE											
Flow Range	37 (LPM) (9.7 GPM)				37 (LPM) (9.7 GPM)				37 (LPM) (9.7 GPM)		
RPM	10 to 31				321@ 60Hz, 266 @ 50 Hz				MAX 321	MAX 321	35 TO 321
Number of Channels	One				One				One		
Reversible	Yes				Yes				Yes	No	
External Control - Input	Not Applicable	0 to 20 mA; or 0 to 10 V; Start/Stop; CW/CCW;Prime (contact closure)			Not Applicable				Not Applicable		
External Control - Output	Not Applicable	0 to 20 mA; 4 to 20 mA; or 0 to 10 V; Tact; Motor Running (NC or NO)			Not Applicable				Not Applicable		
ELECTRICAL											
Voltage VAC (50/60 Hz)	115 v, 60 Hz 1 Ph	230 v, 50/60 Hz 1 Ph	115 v, 60 Hz 1 Ph	230 v, 50/60 Hz 1 Ph	115 v, 60 Hz 1 Ph	230 v, 50/60 Hz 1 Ph	115 v, 60 Hz 1 Ph	230 v, 50/60 Hz 1 Ph	Depends on Motor Size		Rotary Air Motor
Current (mA)	6.5 amps	3.3 amps	5 amps	2.5 amps	8 amps	4 amps	8 amps	4 amps	Depends on Motor Size		12 CFM
Motor Type	NEMA 56C Face, TENV, PMDC				NEMA 56C Face, TENV, IP55 Washdown		NEMA 56C Face, TEFC, Class 1, Div 1	ATEX Zone 2, TEFC, ExsII	NEMA 56C Face	IEC 72/ISO 71 B% Flange	40 PSIG
Motor Size	1/2 HP (0.37 kW)				1/2 HP (0.37 kW)				Min 1/2 HP Max 1-1/2 HP Min 375W, Max 1.1kW		1/2 HP (0.37 kW)
Display	Not Applicable		Four Digit, seven segment LED		Not Applicable				Not Applicable		
Motor Speed	Max. 1800 RPM				Max. 1800 RPM				Max. 1800 RPM		
Speed Regulation of Set Point (repeatability)	± 5% (± 5RPM)		± 3%		Not Applicable				Not Applicable		
Soft-start/electronic brake	Not Applicable		Yes		Not Applicable				Not Applicable		
PHYSICAL SPECIFICATIONS											
Housing Materials	Polyester powder coated aluminum, Nickel-plated steel, 300 Stainless steel, and Poly-carbonate				Polyester powder coated aluminum, Nickel-plated steel, 300 Stainless steel, and Poly-carbonate				Polyester powder coated aluminum, Nickel-plated steel, 300 Stainless steel, and Poly-carbonate		
Pump Head Materials	Nylatron rollers™, Delrin™, Polyester powder coated cast iron				Nylatron rollers™, Delrin™, Polyester powder coated cast iron				Nylatron rollers™, Delrin™, Polyester powder coated cast iron		
IP Rating	IP 56 (Nema 4)				IP 55				Not Applicable, Pump Can Be Washed Down		
Agency Listings	UL, cUL, CE (230 volt only)				UL, cUL, CE				ATEX, Zone 2		
Operating Temperature	0 to 40°C (32 to 104°)				0 to 40°C (32 to 104°)				0 to 40°C (32 to 104°)		
Storage Temperature	-45 to 65°C (-13 to 149°)				-45 to 65°C (-13 to 149°)				-45 to 65°C (-13 to 149°)		
Dimensions (LxWxH)	51x40x66 cm (20x15.5x26.0 in)				51x40x66 cm (20x15.5x26.0 in)				51x40x66 cm (20x15.5x26.0 in)		
Shipping Weight	43 kg (95 lb)		47 kg (98 lb)		41 kg (89 lb)		43 kg (95 lb)		17 kg (37 lb)		23 kg (50 lb)



Barnant