

## Progressive Cavity Pump with Feeder

### I Application

The NTEA pump has a very compact and robust design and it is intended for pomace transfer. This pump is supplied with a "bridge breaker" to provide a correct entry of the product to the feeder screw.

### I Operating principle

Friction between the rotor and the stator creates a vacuum in the inlet area thereby helping the entry of the product into the pump.

The turning motion of the rotor makes the cavities between the rotor and the stator move forward and transport the product to the outlet.

The feeder consists of a rotating blade actuated by a gear motor, it transports the product to the feeder screw avoiding the formation of a "bridge" that impedes the pass of the product to be pumped.

### I Design and features

Highly versatile.

Easy to clean.

Hopper with drain.

Robust construction.

Motor 3 ph 400/690 V, 50 Hz, IP-55.

Helical-bevel gear units.

Pump mounted on trolley.

CE electric panel with ON/OFF switch, inverter and emergency stop push button.

Standard connection: spherical coupling.

Rotary wheels with brakes.

Red painted RAL3003.

### I Materials

Parts in contact with the media

AISI 304

Lantern

Carbon steel

Stator

NBR (special composition for these applications)

Packing gland

PTFE

Surface finish

blasted

### I Options

Liquid detector Max / Min.

Remote control.

Frequency converter (Control Range).

Connections: Garolla, Clamp, Flanges, DIN, etc.

Electromagnetic brakes in motor.

St.St. electric panel.



Hopper with feeder



Control panel



Level sensor



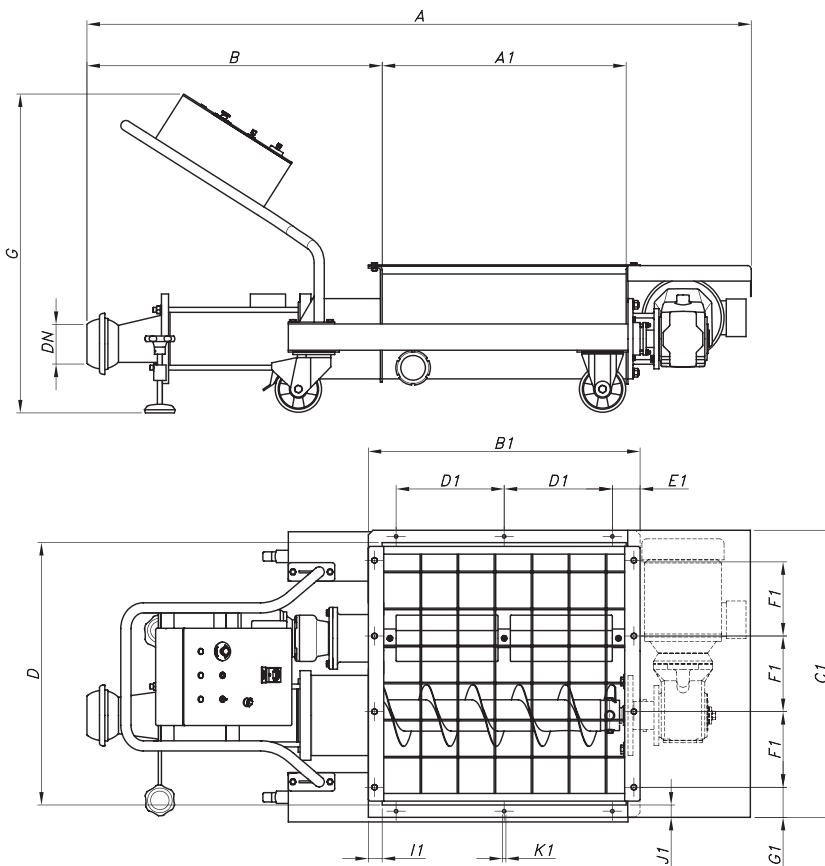
## I Technical specifications

Max. flow	55 Tn/h	242 US GPM
Max. working pressure	6 bar	87 PSI
Max. working temperature	85 °C	185 °F

TYPE	Flow (1) Tn/h	Outlet DN	Speed rpm	Power kW	Feeder		Weight kg
					Speed rpm	Power kW	
NTEA-80	10 - 18	120	185	5,5	60	1,5	365
NTEA-100	20 - 38	150	169	7,5	60	1,5	415
NVEA-120	40-55	150	150	15	60	2,2	570

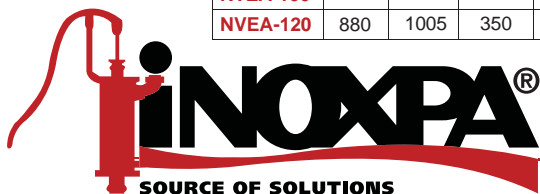
(1) Nominal flow for destemmed grapes at 2 - 4 bars

## I General dimensions



TYPE	A	A1	B	D	E	G	H	H2	CODE
NTEA-80	2150	790	955	850	950	1000	475	225	D4108-2519005510
NTEA-100	2255		1060					210	D4110-2517007511
NVEA-120	2930	790	1240	925	1025	1000	480	205	D4412-2516015017

TYPE	HOPPER DIMENSIONS								
	B1	C1	D1	E1	F1	G1	I1	J1	K1
NTEA-80	880	930	350	90	245	97,5	45	40	11
NTEA-100									
NVEA-120									



The information contained in this brochure is for guidance only. We reserve the right to modify any material or feature without notice in advance. For further information, please, consult our web site. [www.inoxpa.com](http://www.inoxpa.com)

