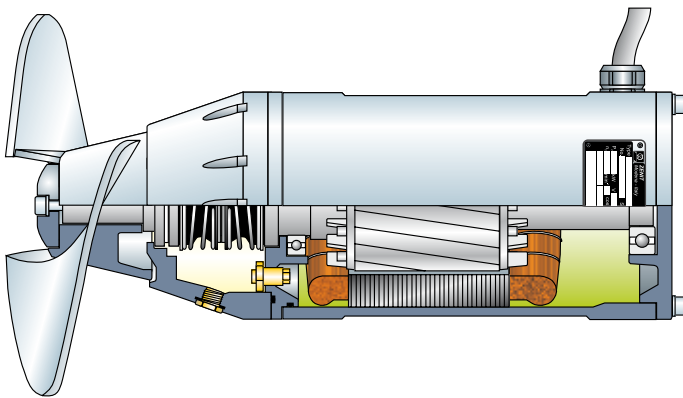


3.1 PRS-PRX-PRO

Submerged mixers

Description and application

Zenit **PRS, PRX and PRO** series mixers are built in cast iron or stainless steel. The propellers, of self-cleaning design, are up to 850 mm in diameter. The electric motors are rated from 1.1 to 15 kW and have 4, 6 or 8 poles; transmission may be direct or by means of a planetary reduction gear. They are used in mixing processes where large quantities of liquid have to be kept in motion to prevent sedimentation. The galvanized iron or stainless steel mounting accessories provide outstanding flexibility and allow mixers to be correctly positioned even if several are installed in the same tank.

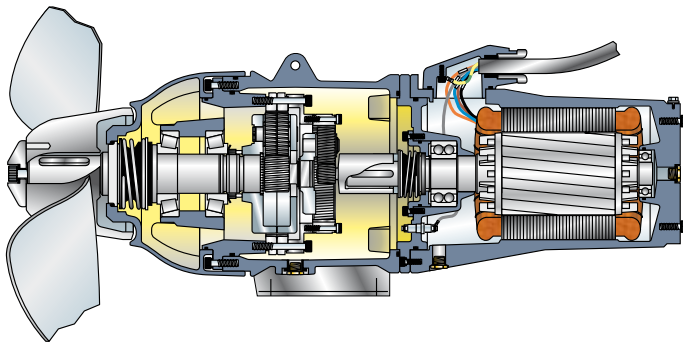


PRS

- Cast iron structure
- Propeller in Fe 510 iron (AISI 316 stainless steel optional)
- Motors from 1.5 to 3.0 kW, with 6 and 8 poles
- From 750 to 1000 rpm, direct transmission
- Suitable for applications with max 3% solid content

PRX

- Structure in AISI 316 stainless steel
- Propeller in AISI 316 stainless steel
- Motors from 1.5 to 3.0 kW, with 6 and 8 poles
- From 750 to 1000 rpm, direct transmission
- Suitable for applications with max 3% solid content



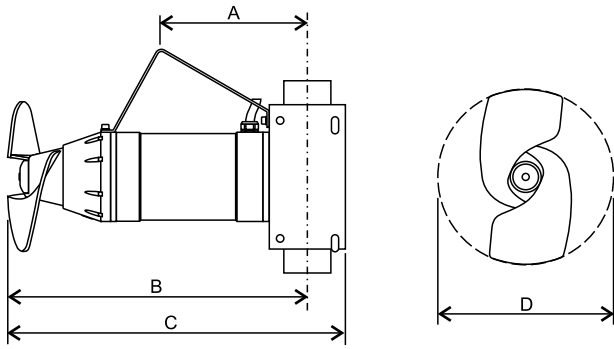
PRO

- Cast iron structure
- Propeller in Fe 510 iron (AISI 316 stainless steel optional)
- Motors from 1.1 to 15 kW, with 4 poles
- From 222 to 350 rpm, transmission with reduction gear
- Suitable for applications with max 12% solid content

Technical characteristics

	P1 (kW)	P2 (kW)	current			poles	start cable	rpm	propeller			
			operating	startup					thrust N	Ø mm	no. of blades	material
PRS 200/6/1/285	1.9	1.5	3.6	25	6	DOL	7x1.5	1000	390	285	2	Fe 510 D
PRS 300/6/1/325	3.0	2.2	6.4	45	6	DOL	7x1.5	1000	530	325	2	Fe 510 D
PRS 400/6/1/360	4.2	3.0	7.8	55	6	DOL	7x1.5	1000	650	360	2	Fe 510 D
PRS 200/8/1/380	2.2	1.5	5.8	41	8	DOL	7x1.5	750	465	380	2	Fe 510 D
PRS 350/8/1/440	3.4	2.5	7.1	50	8	DOL	7x1.5	750	600	440	2	Fe 510 D
PRX 200/6/1/285	1.9	1.5	3.6	25	6	DOL	7x1.5	1000	390	285	2	AISI 316
PRX 300/6/1/325	3.0	2.2	6.4	45	6	DOL	7x1.5	1000	530	325	2	AISI 316
PRX 400/6/1/360	4.2	3.0	7.8	55	6	DOL	7x1.5	1000	650	360	2	AISI 316
PRX 200/8/1/380	2.2	1.5	5.8	41	8	DOL	7x1.5	750	465	380	2	AISI 316
PRX 350/8/1/440	3.4	2.5	7.1	50	8	DOL	7x1.5	750	600	440	2	AISI 316
PRO 150/4/7/540	1.7	1.1	3.0	21	4	DOL	7x1.5	222	295	540	2	Fe 510 D
PRO 200/4/6/540	2.1	1.5	3.9	27	4	DOL	7x1.5	268	405	540	2	Fe 510 D
PRO 300/4/6/550	2.8	2.2	5.2	36	4	DOL	7x1.5	268	575	550	2	Fe 510 D
PRO 400/4/4/540	4.0	3.0	7.2	51	4	DOL	7x1.5	350	805	540	2	Fe 510 D
PRO 550/4/4/550	5.0	4.0	8.6	60	4	DOL	7x1.5	350	980	550	2	Fe 510 D
PRO 750/4/4/600	7.2	5.5	12.5	88	4	Y/Δ	12x2.5	350	1450	600	2	Fe 510 D
PRO 1000/4/4/640	9.0	7.5	15.2	105	4	Y/Δ	12x2.5	350	1950	640	2	Fe 510 D
PRO 1500/4/6/800	15.1	11.0	25.4	178	4	Y/Δ	12x2.5	268	3400	800	2	Fe 510 D
PRO 2000/4/6/850	17.9	15.0	29.8	210	4	Y/Δ	12x2.5	268	4600	850	2	Fe 510 D

Overall dimensions and weights

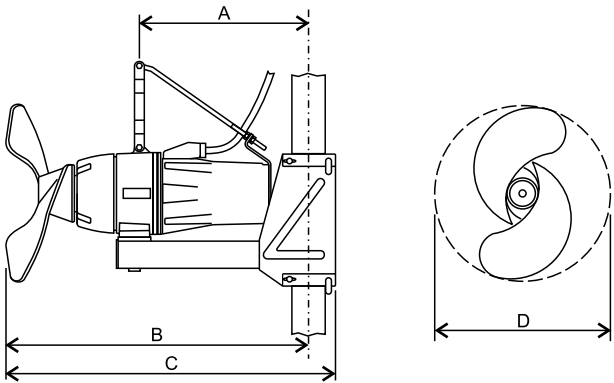


	A	B	C	D	Kg
PRS 200/6/1/285	260	585	670	285	59
PRS 300/6/1/325	260	585	670	325	59
PRS 400/6/1/360	260	585	670	360	59
PRS 200/8/1/380	250	577	660	380	66
PRS 350/8/1/440	250	577	660	440	67

	A	B	C	D	Kg
PRX 200/6/1/285	260	585	670	285	59
PRX 300/6/1/325	260	585	670	325	59
PRX 400/6/1/360	260	585	670	360	59
PRX 200/8/1/380	250	577	660	380	66
PRX 350/8/1/440	250	577	660	440	67

Dimensions in mm

All weights and dimensions are indicative only



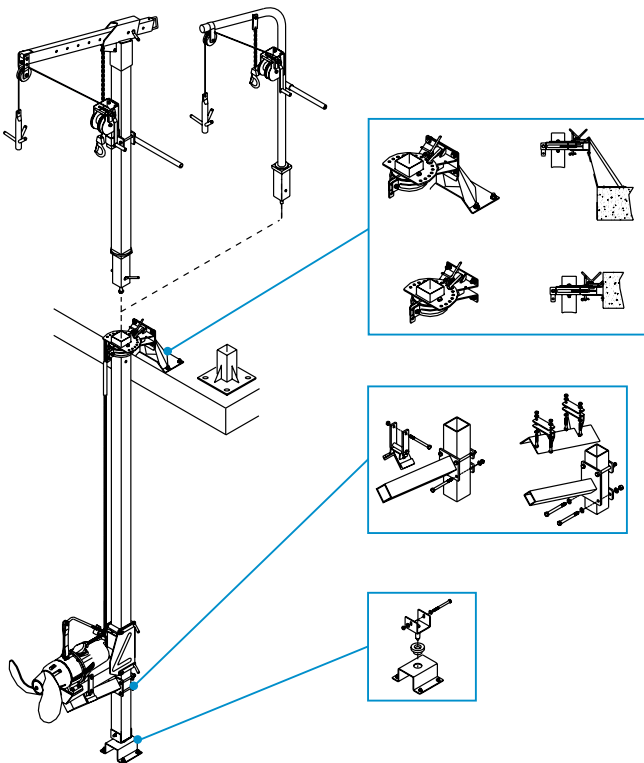
	A	B	C	D	Kg
PRO 150/4/7/540	450	988	1070	540	141
PRO 200/4/6/540	450	988	1070	540	136
PRO 300/4/6/550	450	978	1060	550	141
PRO 400/4/4/540	450	988	1070	540	138
PRO 550/4/4/550	450	978	1060	550	138
PRO 750/4/4/600	540	1123	1220	600	223
PRO 1000/4/4/650	540	1123	1220	640	229
PRO 1500/4/6/800	650	1313	1410	800	314
PRO 2000/4/6/850	625	1313	1410	850	337

Dimensions in mm

All weights and dimensions are indicative only

Installation

PROpeller mixers can be supplied with a full range of installation accessories, which allow mounting and simplify maintenance in tanks of all kinds, as well as ensuring that the mixer is correctly positioned in the tank thanks to the various adjustments possible.



The mixer is supplied as standard with a runner and hoisting hook. All structural work can be supplied in hot-galvanized iron or stainless steel.

Various installation accessories are available for large-sized mixers on request.

All lifting systems are built with a rugged structure to guarantee efficiency and durability.

An additional advantage comes from full dismantlability into individual pieces, allowing the system to be assembled even without lifting equipment.

Thanks to a special connection on the top, all Zenit posts allow the lifting system to be removed for use on more than one installation.

