

Immersion pumps

Type IMM 80



Usages:

The pumps are suitable to transfer liquids containing impurities measuring up to 2-3 mm.

The hydraulic components, namely the brass impeller, the scroll and the aluminium pump body allow the pumps to be used with water, emulsions and oily substances in general with a maximum viscosity of 3° Engler (21 CST).

The temperature of the liquid must not exceed 90° C.

They are usually used on:

- **Machine tools** (milling machines – lathes - drills)
- **Glass processing machines** (TRI version)
- **Surface treatment systems** (version in cast iron)*
- **Filtration systems**
- **Air-conditioning systems**

They should usually be installed on a tank, with a capacity in proportion to the flow rate, at about 4 – 5 cm. from the bottom. It is important to check that the maximum level of the liquid in the tank always remains 3 – 4 cm. lower than the flange (see figure).

In cases where the liquid is particularly dirty, the user is recommended to construct the tank in compartments to allow the dirt to deposit before it is stirred up by the pump.

For other usages you are advised to consult our technical office.

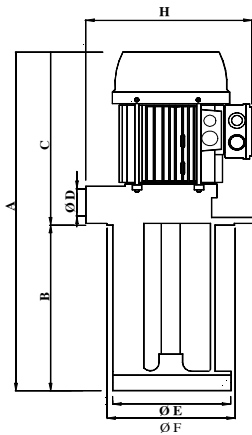
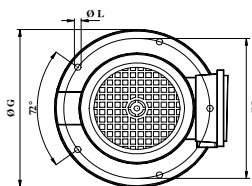


Table of dimensions and weights

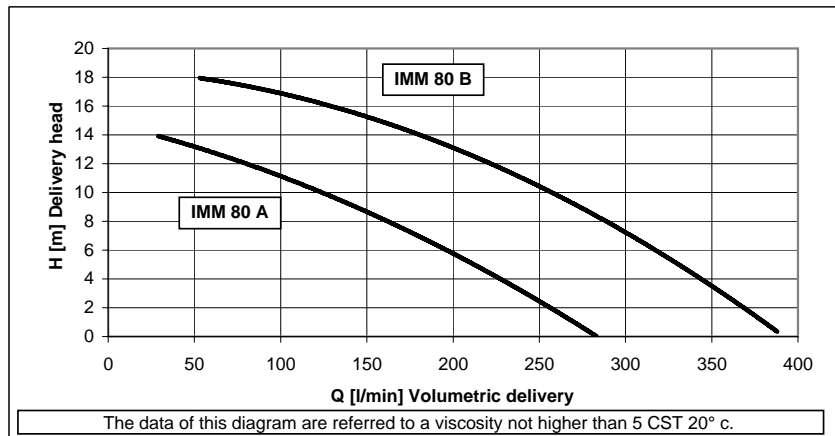
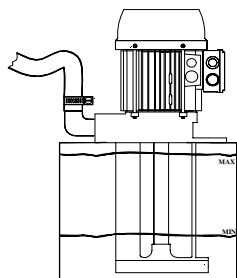
TYPE	A mm	B mm	C mm	ØD mm	ØE mm	ØF mm	ØG mm	H mm	ØI mm	ØL mm	Kg.
IMM 80 A	485	200* T	285	1 1/4"	202	220	250	260	235	9	10,95
	535	250* T									12,75
	585	300* T									14,55
	635	350* T									16,35
	815	530									18,00
IMM 80 B	485	200* T	285	1 1/4"	202	220	250	260	235	9	14,15
	535	250* T									14,55
	585	300* T									14,95
	635	350* T									15,35
	815	530									18,25

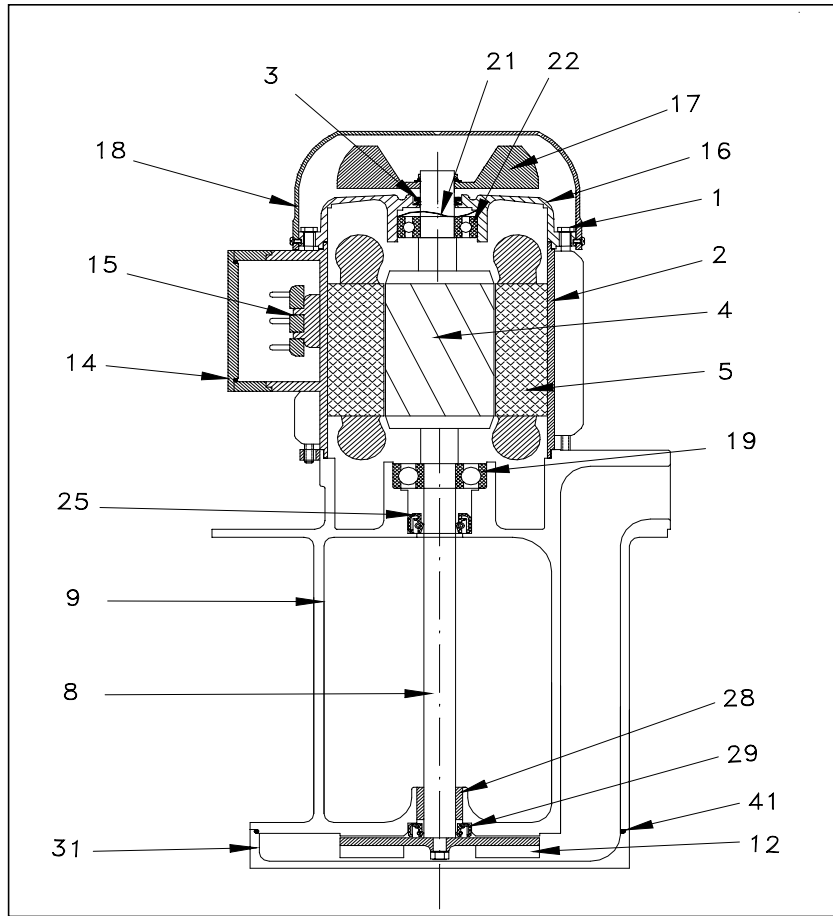
On request: T = execution TRI * = cast iron pump body



Electrical features

Type	KW. Input	Hz. 50		Hz. 60			
		230/400	254-290/440-500	230/400	208-230/440-460	254-277/440-480	318-346/550-600
IMM 80 A	1,15	3,3/1,9	2,6/1,5	4,0/2,3	3,6/2,1	3,3/1,9	2,8/1,6
IMM 80 B	1,47	4,8/2,8	3,8/2,2	5,8/3,4	5,2/3,0	4,8/2,8	4,0/2,3





Type IMM 80A

Type IMM 80B

Components	Materials
1 Rod	Steel
2 Frame	Aluminium
3 V-Ring \varnothing 20	NBR
4 Rotor	
5 Stator	
8 Shaft	Steel C 40**
9 Pump body	Aluminium*
12 Impeller	Brass 58*
14 Terminal box	Nylon
15 Terminal block	mm. 50x32 6P
16 Non-drive end shield	Aluminium
17 Fan	Nylon
18 Fan cover	Nylon***
19 Bearing	6205 ZZ
21 Spring ring	\varnothing 47
22 Bearing	6204 ZZ
25 Sealing ring	NBR 25X40X5
28 Bronze bearing	23X20X20
29 Sealing ring	NBR 20X32X5
31 House impeller	Aluminium*
41 OR ring	NBR 180X2

Components	Materials
1 Rod	Steel
2 Frame	Aluminium
3 V-Ring \varnothing 20	NBR
4 Rotor	
5 Stator	
8 Shaft	Steel C 40**
9 Pump body	Aluminium*
12 Impeller	Brass 58*
14 Terminal box	Nylon
15 Terminal block	mm. 50x32 6P
16 Non-drive end shield	Aluminium
17 Fan	Nylon
18 Fan cover	Nylon***
19 Bearing	6205 ZZ
21 Spring ring	\varnothing 47
22 Bearing	6204 ZZ
25 Sealing ring	NBR 25X40X5
28 Bronze bearing	23X20X20
29 Sealing ring	NBR 20X32X5
31 House impeller	Aluminium*
41 OR ring	NBR 180X2

On request

*	Cast iron G20 - only length mm. 250-300-350
**	Aisi 420
***	Sheet