

Immersion pumps

Type EPC 80B - 80C - 90 B



Usages:

These pumps are suitable for transferring clean liquids containing impurities measuring up to 30 micron. The hydraulic components, namely the brass impeller, scroll and cast iron pump body, allow the pumps to be used with emulsions and oily substances, glycols and liquids in general, as long as they are not oxidative for the construction materials. Viscosity must not exceed 3° Engler (21 CST). The temperature of the liquid must not exceed 90° C.

They are usually used on:

- Boring centres
- Cooling exchanges

They should usually be installed on a tank, with a capacity in proportion to the flow rate, at about 3-4 cm. from the bottom. It is important to check that the maximum level of the liquid in the tank always remains 3 – 4 cm. lower than the flange (see figure).

For other usages you are advised to consult our technical office.

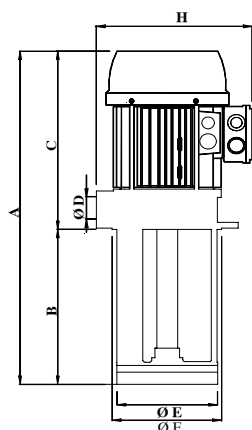
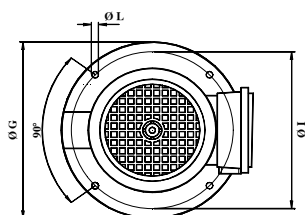


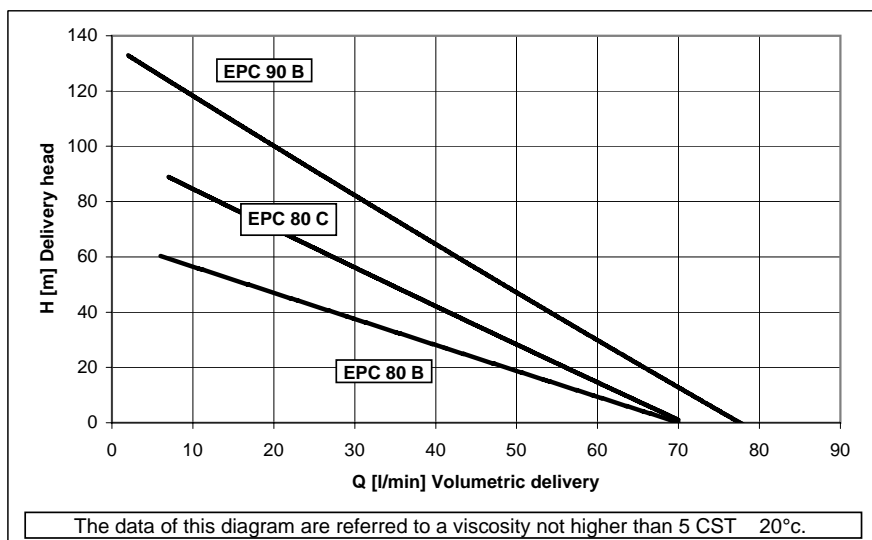
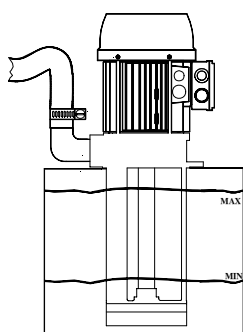
Table of dimensions and weights

TYPE	A mm	B mm	C mm	ØD	ØE mm	ØF mm	ØG mm	H mm	ØI mm	ØL mm	Kg.
EPC 80B	381	100	281	3/4"	98	100	130	200	115	7 N. 4	13,950
	411	130									14,250
	461	180									14,450
	511	230									14,650
	561	280									14,820
	641	360									15,380
EPC 80C	396	115	281	3/4"	98	100	130	200	115	7 N. 4	16,220
	426	145									16,520
	476	195									16,720
	526	245									16,920
	576	295									17,090
	656	375									17,650
EPC 90B	460	140	320	3/4"	98	100	130	220	115	7 N. 4	30,300
	490	170									30,600
	540	220									30,800
	590	270									31,000
	640	320									31,200
	720	400									31,800



Electrical features

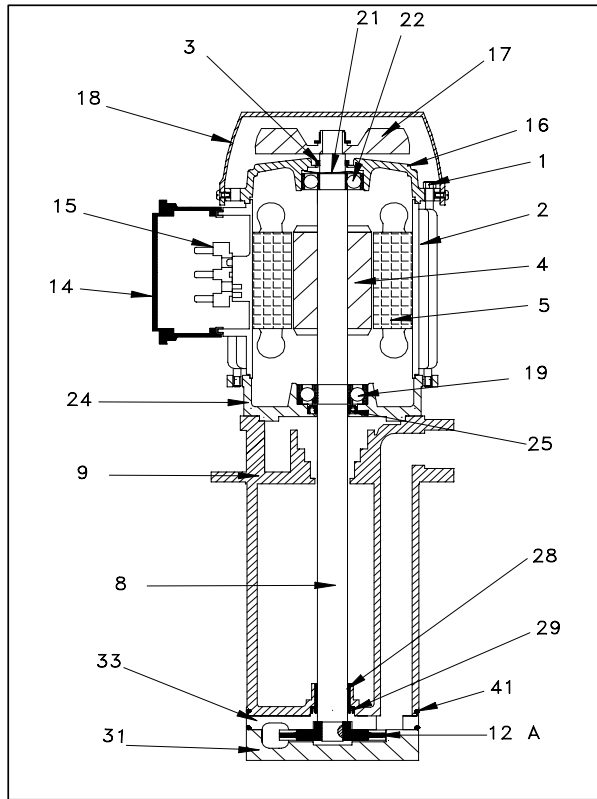
TYPE	KW. Input	Hz. 50		Hz. 60			
		230/400	254-290/440-500	230/400	208-230/440-460	254-277/440-480	318-346/550-600
EPC 80B	1,70	5,0/2,9	4,0/2,32	6,0/3,48	5,3/3,1	5,0/2,9	4,2/2,42
EPC 80C	2,60	6,9/4,0	5,5/3,2	8,3/4,8	7,3/4,2	6,9/4,0	5,7/3,34
EPC 90B	3,00	9,3/5,4	7,8/4,5	11,2/6,48	9,7/5,6	9,3/5,4	8,13/4,7



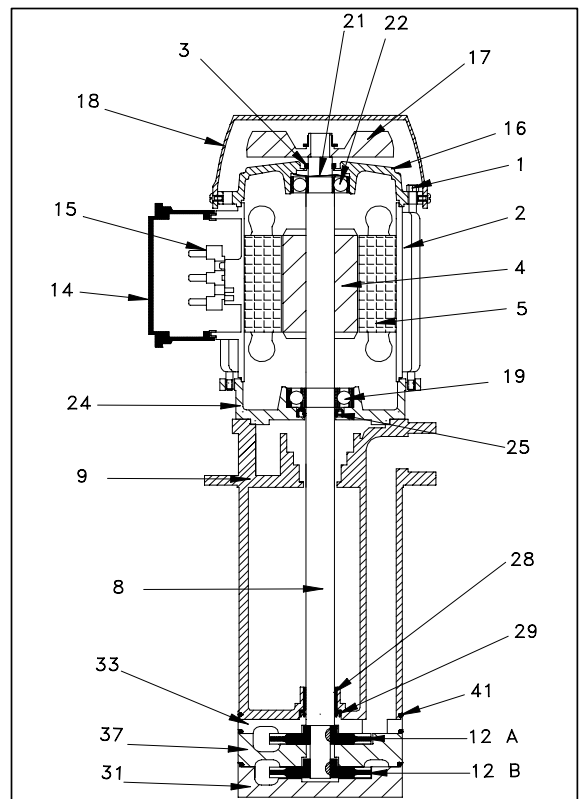
Immersion pumps

Type EPC 80B - 80C - 90 B

EPC 80 B



EPC 80 C - 90 B



EPC 80B

Components	Materials
1 Rod	Steel
2 Frame	Aluminium
3 V ring	NBR Ø 20
4 Rotor	
5 Stator	
8 Shaft	Steel C 40**
9 Pump body	Cast iron G 20
12 Impeller	Brass 58
14 Terminal box	Nylon
15 Terminal block	mm. 50x32 6P
16 Non-drive end shield	Aluminium
17 Fan	Nylon
18 Fan cover	Nylon***
19 Bearing	6205 ZZ
21 Spring ring	ø 47
22 Bearing	6204 ZZ
24 Reduction flange	Aluminium
25 Sealing ring	NBR 25X40X7
28 Bronze bearing	19x17x15
29 Sealing ring	NBR 17x25x4
31 House impeller	Cast iron G 20
33 Reduction flange	Cast iron G 20
41 OR ring (N. 2)	NBR 82,27x1,78

EPC 80C

Components	Materials
1 Rod	Steel
2 Frame	Aluminium
3 V ring	NBR Ø 20
4 Rotor	
5 Stator	
8 Shaft	Steel C 40**
9 Pump body	Cast iron G 20
12 Impeller	Brass 58
14 Terminal box	Nylon
15 Terminal block	mm. 50x32 6P
16 Non-drive end shield	Aluminium
17 Fan	Nylon
18 Fan cover	Nylon***
19 Bearing	6205 ZZ
21 Spring ring	ø 47
22 Bearing	6204 ZZ
24 Reduction flange	Aluminium
25 Sealing ring	NBR 25X40X7
28 Bronze bearing	19x17x15
29 Sealing ring	NBR 17x25x4
31 House impeller	Cast iron G 20
33 Reduction flange	Cast iron G 20
37 Diffuser	Cast iron G 20
41 OR ring (N. 3)	NBR 82,27x1,78

EPC 90B

Components	Materials
1 Rod	Steel
2 Frame	Aluminium
3 V ring	NBR Ø 25
4 Rotor	
5 Stator	
8 Shaft	Steel C 40**
9 Pump body	Cast iron G 20
12 Impeller	Brass 58
14 Terminal box	Nylon
15 Terminal block	mm. 50x32 6P
16 Non-drive end shield	Aluminium
17 Fan	Nylon
18 Fan cover	Nylon***
19 Bearing	6206 ZZ
21 Spring ring	ø 52
22 Bearing	6205 ZZ
24 Reduction flange	Aluminium
25 Sealing ring	NBR 25X40X7
28 Bronze bearing	19x17x15
29 Sealing ring	NBR 17x25x4
31 House impeller	Cast iron G 20
33 Reduction flange	Cast iron G 20
37 Diffuser	Cast iron G 20
41 OR ring (N. 3)	NBR 82,27x1,78

On request

** Aisi 420
*** Sheet